

Tessuti / Fabrics / Tissus / Bezug

Caratteristiche tecniche / Technical specifications / Caractéristiques techniques / Technische Daten

	Group 1	Group 2	Group 3
Pelle ecologica Ecological leather	Globus	Magnum Stamskin Top Ginkgo	Exmoor
Spalmato decorato Pattern vinyl		Michigan	Silvertex Wild Heather York Weave
Tessuto Fabric	Nativa	Taylor	Texture Plain Digital
Microfibra Microfiber	Alkemia		Alkemia AU

Type	Name	Price group	Composition	Abrasion test	Colour fastness	Fire retardant	Waterproof	Waterproof + breathable	Antibacterial
Ecological leather	Globus	1	88% PVC - 12% PES	100.000	6	▪	▪		▪
Ecological leather	Magnum	2	88% PVC - 7% PL - 4% CO - 1% PC	>80.000	5	▪	▪	▪	▪
Ecological leather	Stamskin Top	2	100% PVC	>120.000	ND	▪	▪		▪
Ecological leather	Ginkgo	2	88% PVC - 8% PES - 4% COTTON	50.000	>6	▪	▪		▪
Ecological leather	Exmoor	3	100% PVC	>300.000	ND	▪	▪		▪
Pattern vinyl	Michigan	2	89% PVC - 11% COTTON	40.000	>6	▪	▪		▪
Pattern vinyl	Silvertex	3	100% PVC	>300.000	>7	▪	▪		▪
Pattern vinyl	Wild Heather	3	100% PVC	>300.000	>7	▪	▪		▪
Pattern vinyl	York Weave	3	100% PVC	>300.000	>7	▪	▪		▪
Fabric	Nativa	1	100% PP NATIVA	>70.000	4/5				▪
Fabric	Taylor	2	100% POLYESTER	60.000	6/7	▪			
Fabric	Texture	3	100% RECYCLED POLYESTER	100.000	6	▪	▪	▪	▪
Fabric	Plain	3	100% RECYCLED POLYESTER	100.000	6	▪	▪	▪	▪
Fabric	Digital	3	100% TREVIRA CS	50.000	5/7	▪			
Microfiber	Alkemia	1	100% POLYESTER	30.000	4				
Microfiber	Alkemia AU	3	100% POLYESTER	30.000	4	▪			

Tessuti / Fabrics / Tissus / Bezug

Group 1

Globus _ Ecological leather



E01A_660



E01B_1460



E01C_1860



E01D_2560

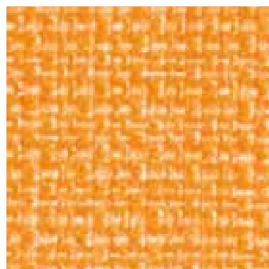


E01E_2860

Nativa _ Fabric



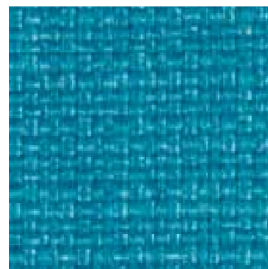
E12A_810



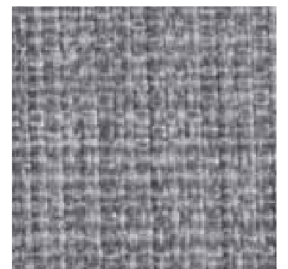
E12B_301



E12C_900



E12D_710



E12E_600

Alkemia _ Microfiber



E09A_23



E09B_19



E09C_10



E09D_2

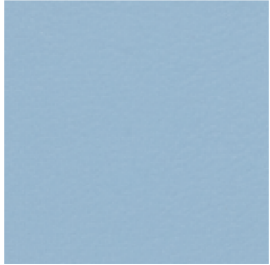


E09E_14

Tessuti / Fabrics / Tissus / Bezug

Group 2

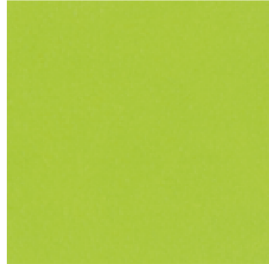
Magnum _ Ecological leather



E05A_001



E05B_304



E05C_808



E05D_404

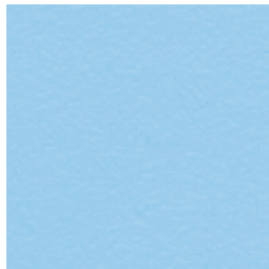


E05E_200

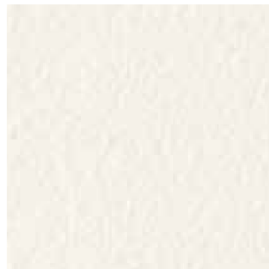
Stamskin Top _ Ecological leather



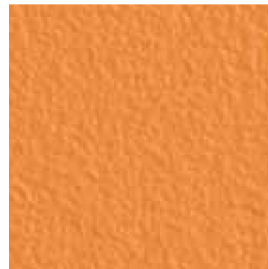
E15A_F4340-07481



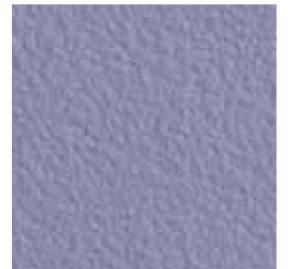
E15B_F4340-20124



E15C_F4340-10120



E15D_F4340-20127



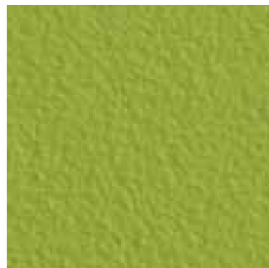
E15E_F4340-20123



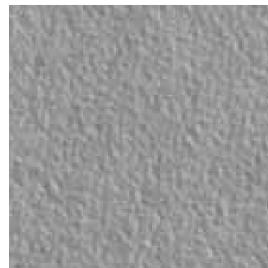
E15F_F4340-07476



E15H_F4340-07479



E15I_F4340-07485



E15J_F4340-07434



E15L_F4340-20121

Ginkgo _ Ecological leather



E14A_01332049



E14B_01332013



E14C_01332052



E14D_01332002

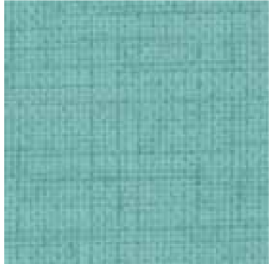


E14E_01332009

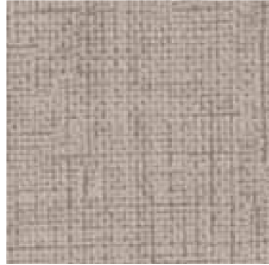
Tessuti / Fabrics / Tissus / Bezug

Group 2

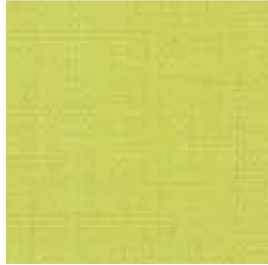
Michigan _ Pattern vinyl



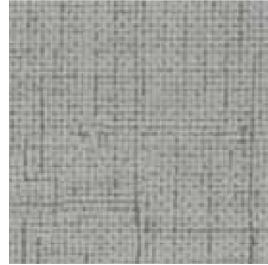
E02A_10896



E02B_74558



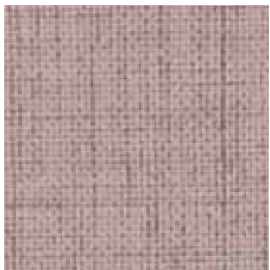
E02C_11070



E02D_73461



E02E_31496



E02F_74557



E02G_80401



E02H_21705



E02I_31497



E02J_62612

Taylor _ Fabric



E13A_1650



E13B_850



E13C_1250



E13D_1850



E13E_2450

Tessuti / Fabrics / Tissus / Bezug

Group 3

Exmoor _ Ecological leather



E07A_UPTON



E07B_CHERITON



E07C_BRATTON



E07D_ELWORTHY



E07E_EXTON

Silververtex _ Pattern vinyl



E11A_122-1051



E11B_122-6065



E11C_122-2064



E11D_122-0005



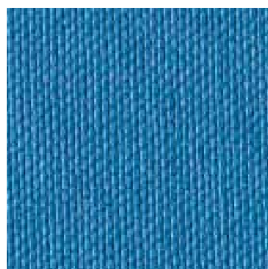
E11E_122-5020



E11F_122-4001



E11G_122-5008



E11H_122-3066



E11I_122-4024



E11J_122-9002

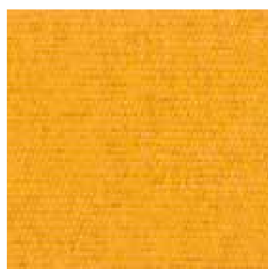
Wild Heather _ Pattern vinyl



E06A_LEWIS



E06B_NINIAN



E06C_CLYDE



E06D_SKYE



E06E_CLOVA

Tessuti / Fabrics / Tissus / Bezug

Group 3

York Weave _ Pattern vinyl



E08A_FISHERGATE



E08B_ALDWARK



E08C_TOFT GREEN



E08D_ORY



E08E_DEANGATE

Texture _ Fabric



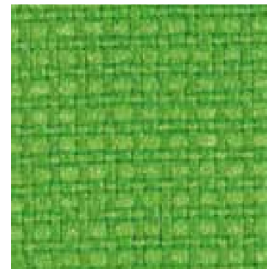
E04A_YW079



E04B_YW083



E04C_YW145

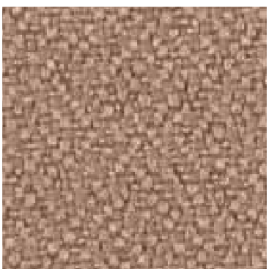


E04D_YW200



E04E_YW208

Plain _ Fabric



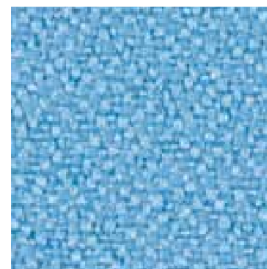
E03A_YH071



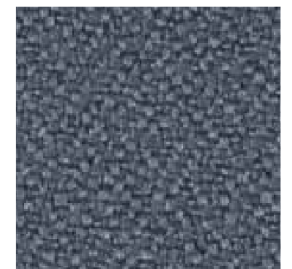
E03B_YH096



E03C_YH106



E03D_YH157

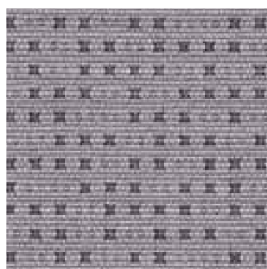


E03E_YH171

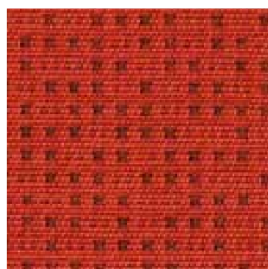
Digital _ Fabric



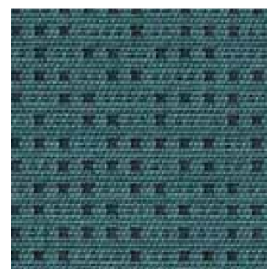
E16A_60000



E16B_60011



E16C_64065



E16D_67038



E16E_65048

Tessuti / Fabrics / Tissus / Bezug

Group 3

Alkemia AU _ Microfiber



E17A_2390



E17B_1990



E17C_1090



E17D_290



E17E_1490